

STILSON

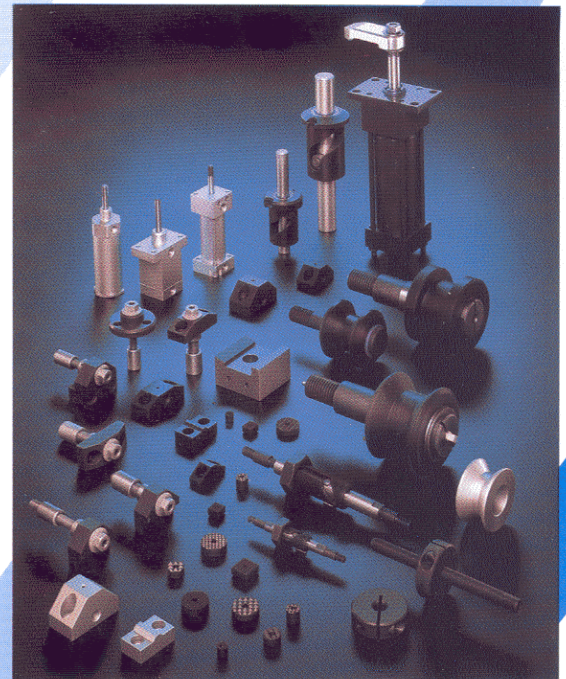
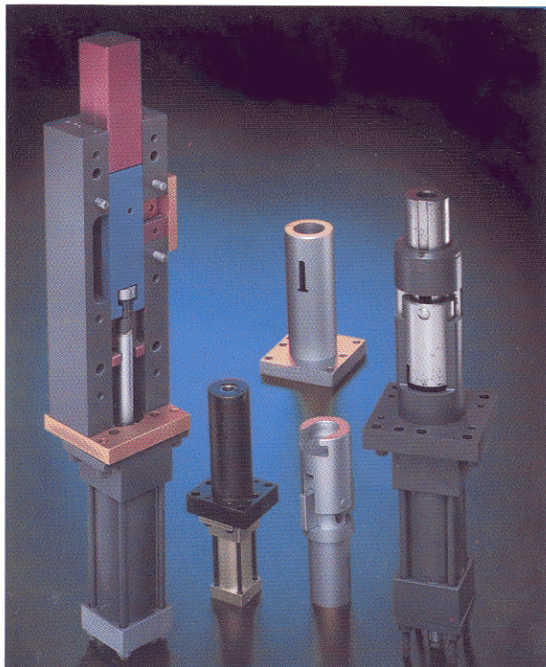
Diversified Products For Industry

Couplers & Adapters



**Handling
Components**

**Powered/Mechanical
Wedge Locks**



**Machine
Components**

**www.stilsonproducts.com
info@stilsonproducts.com**

**P: 586.778.1100 F: 586.778.4660
Toll Free US Only: 1.800.400.5978**

Stilson Cylinder Rod Couplers and Adapters



Here's an idea that can save trouble, time and money. The Stilson two-piece, quick-disconnect floating cylinder rod coupler.

It eliminates leak producing side-loads caused by the inherent out-of-squareness of most cylinders (or misalignment at assembly) by providing side clearance "float" between its male and female parts.

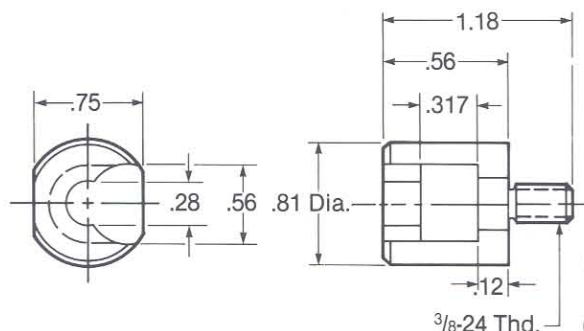
It comes in two models. One provides axial lost motion for applications requiring impact such as breaking loose wedge-type clamps. The other model provides minimal clearance for applications requiring axial positioning.

It allows cylinders to be easily assembled to relatively inaccessible driven members because it is quickly connected (or disconnected)

by side-wise movement between its male and female parts. It also allows driven members to freely rotate under load.

How to select: Order couplers and adapters separately. Select a coupler by thread size, thread style (male/female) and action (rap/non-rap). Next select the correct size adapter by reading across the chart. Then select the coupler mounting style (screw/threaded). Material: Alloy steel. Hardness: Rockwell "C" 40-44. Finish: Black oxide.

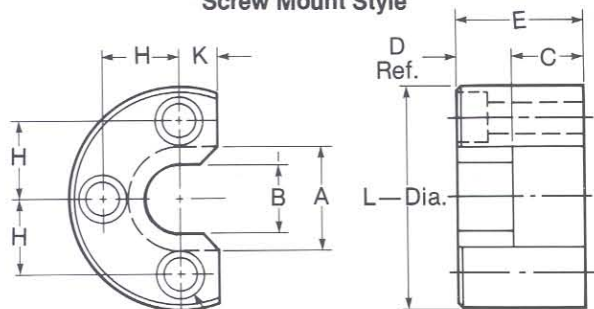
Adapters



Mini-Adapter
Part No. FCA-8188

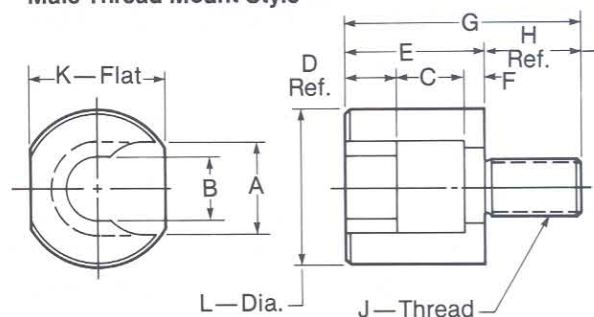
(Male Thread Mount Style Only)

Screw Mount Style



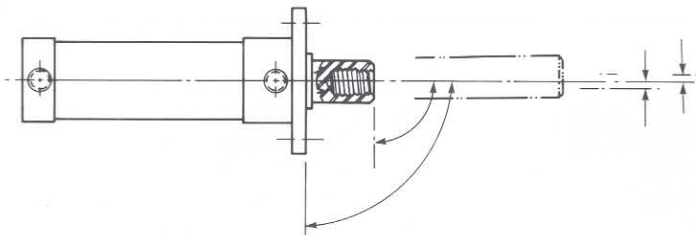
For Soc. Hd. Scr. — J 3 Holes

Male Thread Mount Style

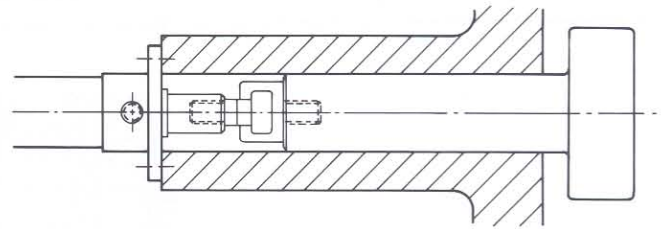


Mounting Style	Part No.	A	B	C	D	E	F	G	H	J	K	L
Screw	FCA-8148	.93	.50	.690	.43	1.12	—	—	.75	5/16"	.38	2.18
Thread	FCA-8151	.93	.53	.687	.44	1.50	.37	2.25	.75	7/16"-20	1.31	1.44
Screw	FCA-8149	1.31	.81	1.003	.75	1.75	—	—	1.00	3/8"	.44	2.93
Thread	FCA-8152	1.31	.81	1.000	.75	2.12	.37	3.25	1.12	3/4"-16	1.75	1.93
Screw	FCA-8150	1.56	1.06	1.125	.88	2.00	—	—	1.19	1/2"	.56	3.44
Thread	FCA-8153	1.56	1.06	1.128	.88	2.38	.37	4.00	1.62	1"-14	2.38	2.68

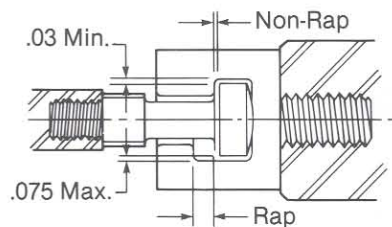
Stilson Cylinder Rod Couplers and Adapters



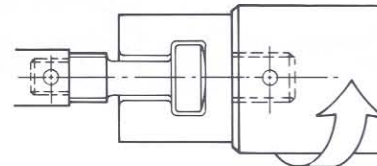
Allows up to 1° of angular misalignment between coupler and adapter.



Allows quick assembly/disassembly.



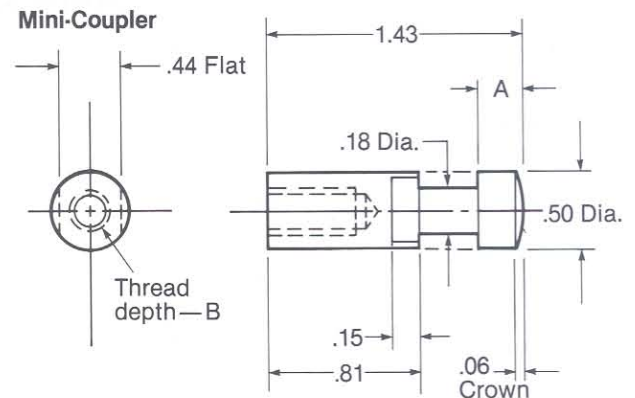
Compensates for radial misalignment.



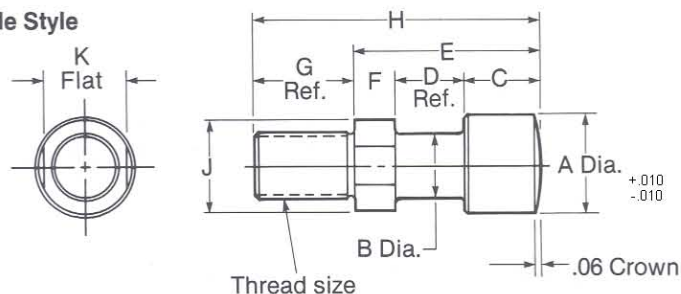
Allows driven member to rotate freely.

Couplers

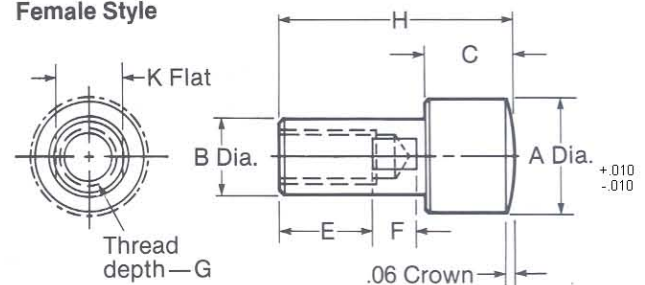
Thread Size	Action	Part No.	A	B
1/4"-28	Rap	FC-8182	.187	.38
	Non-Rap	FC-8183	.312	.38
5/16"-24	Rap	FC-8184	.187	.47
	Non-Rap	FC-8185	.312	.47
3/8"-24	Rap	FC-8186	.187	.56
	Non-Rap	FC-8187	.312	.56



Male Style



Female Style



Thd. Size Safe Load*	Thread Style	Action	Part No.	A	B	C ^{+0.000 -0.005}	D	E	F	G	H	J	K
7/16"-20 5,300	Male	Rap	FC-8154	.88	.44	.432	.82	1.75	.50	.63	2.38	.62	.50
		Non-Rap	FC-8155	.88	.44	.680	.57	1.75	.50	.63	2.38	.62	.50
	Female	Rap	FC-8160	1.25	.75	.750	—	.93	.56	1.00	2.38	—	.62
		Non-Rap	FC-8161	1.25	.75	.993	—	.93	.56	1.00	2.62	—	.62
3/4"-16 14,700	Male	Rap	FC-8156	1.25	.75	.750	1.13	2.38	.50	1.00	3.38	1.00	.88
		Non-Rap	FC-8157	1.25	.75	.993	.89	2.38	.50	1.00	3.38	1.00	.88
	Female	Rap	FC-8162	1.50	1.00	.870	—	1.18	.56	1.25	2.75	—	.88
		Non-Rap	FC-8163	1.50	1.00	1.118	—	1.18	.56	1.25	3.00	—	.88
1"-14 24,900	Male	Rap	FC-8158	1.50	1.00	.870	1.26	2.75	.62	1.50	4.25	1.38	1.25
		Non-Rap	FC-8159	1.50	1.00	1.118	1.01	2.75	.62	1.50	4.25	1.38	1.25

*Safe load in pounds