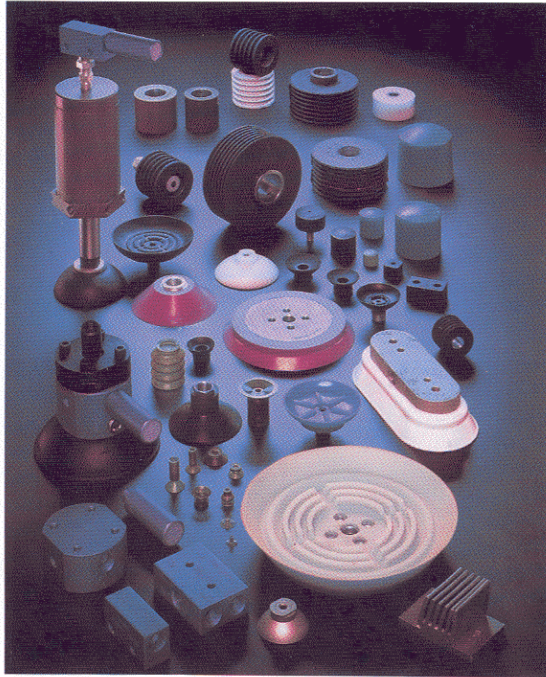


STILSON

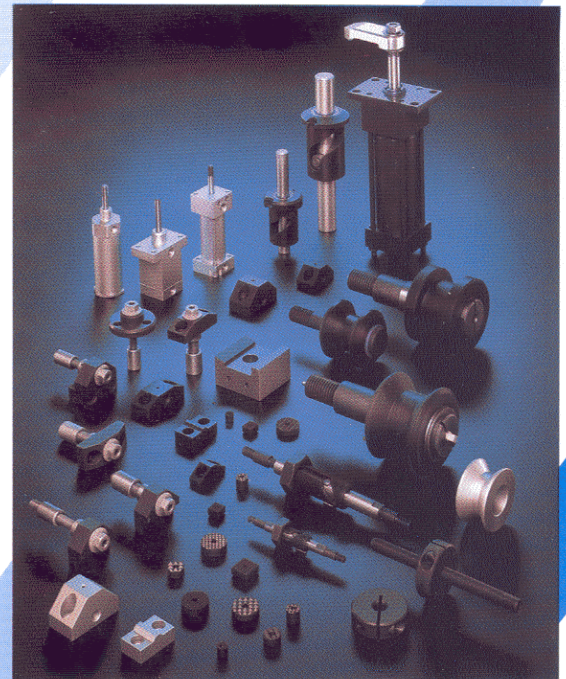
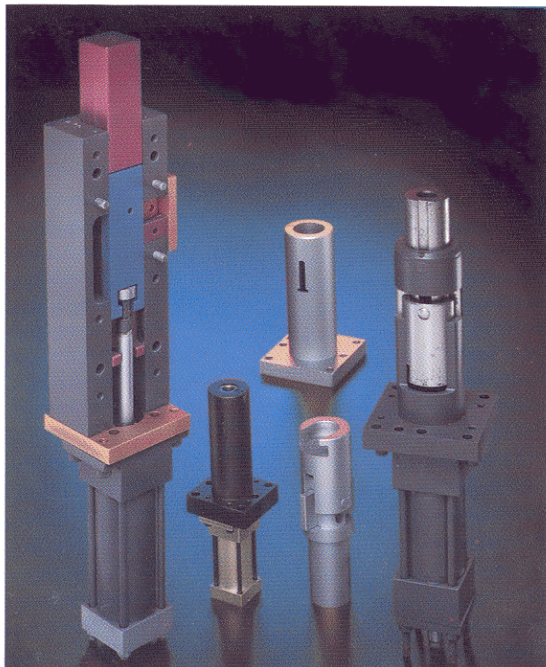
Diversified Products For Industry

Mic-Ro-Just & Adjustment Screws



**Handling
Components**

**Powered/Mechanical
Wedge Locks**



**Machine
Components**

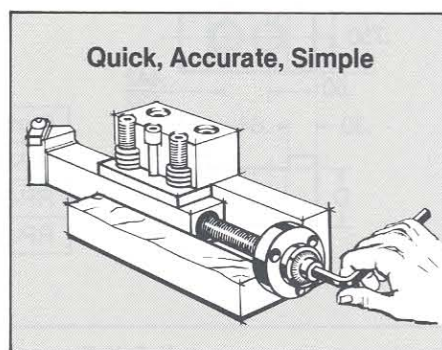
**www.stilsonproducts.com
info@stilsonproducts.com**

**P: 586.778.1100 F: 586.778.4660
Toll Free US Only: 1.800.400.5978**

Stilson Mic-Ro-Just



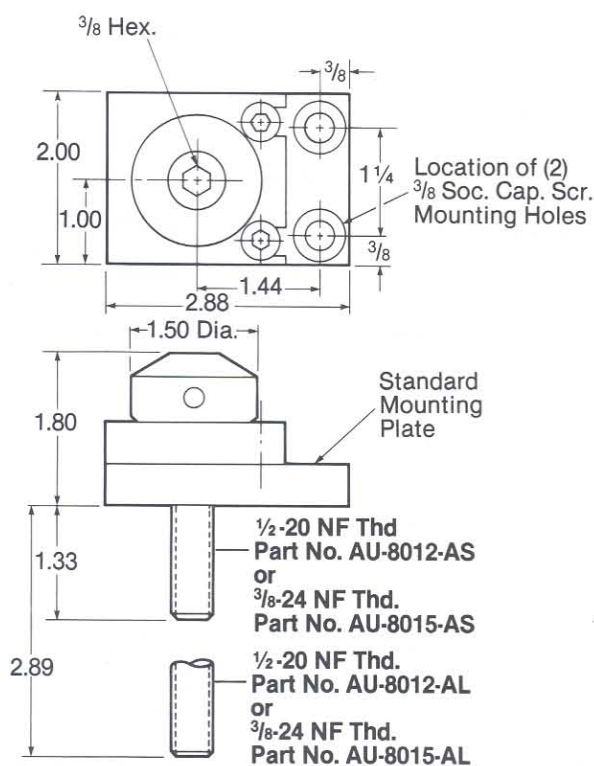
The Stilson Mic-Ro-Just provides accurate adjustment of cutting tools, boring bars, tool blocks, magazines, V blocks, end stops and other objects requiring precision adjustment. With Mic-Ro-Just, simply set the tool by rotating the calibrated dial mounted on the tool block. The dial is graduated in .0005 increments, with .025 linear motion per revolution. A precision screw advances or retracts the tool with micrometer accuracy.



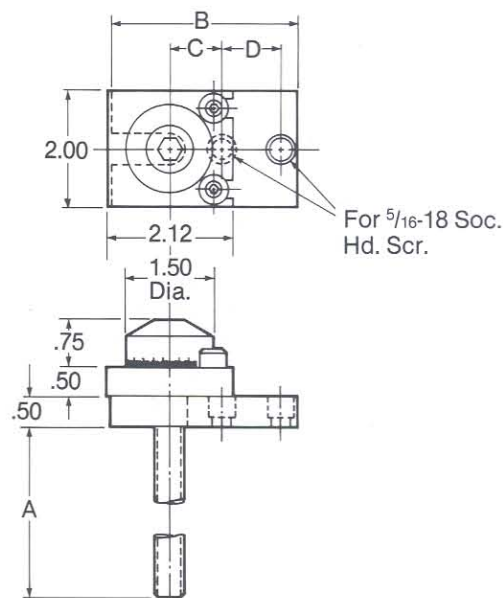
Check Mic-Ro-Just Features:

- Fine pitch micrometer threaded screw, fitted to precision manufactured bushings, minimized backlash.
- Mic-Ro-Just minimizes the need for expensive, quick change, pre-set tooling. The Mic-Ro-Just unit speeds set-up and adjustment to the point that expensive fixtures are no longer justifiable.
- Reference calibrations on micrometer dial enables quick, accurate adjustment of tools or stops to within tenths setting.
- Mic-Ro-Just is adaptable to virtually all tooling and is available in 6 mounting styles.
- Mic-Ro-Just is available in two micrometer thread sizes - $\frac{3}{8}$ -40 and $\frac{1}{2}$ -40.
- High volume production of Mic-Ro-Just permits it to be priced considerably lower than other such adjustment devices.

Stilson Precision Adjustment Units

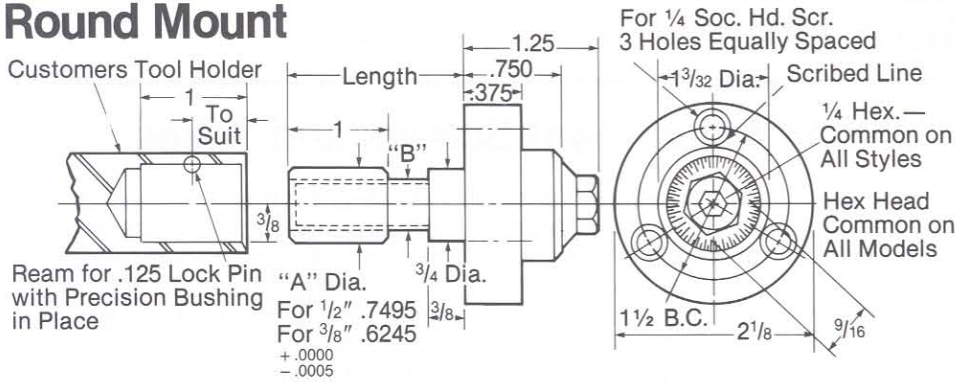


Longer Lengths Available on Request

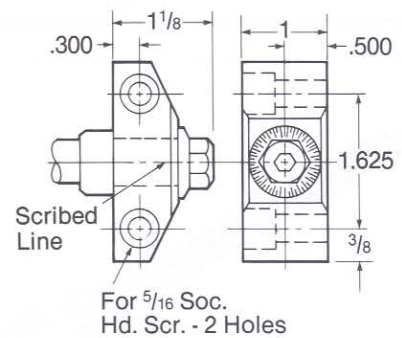


Assy. Part No.	A	Thread Size	B	C	D
AU-8012-NB-5	6.00	$\frac{1}{2}$ "-20 NF	$\frac{3}{16}$ "	.656	1.000
AU-8012-NB-3	8.50	$\frac{1}{2}$ "-20 NF	$2\frac{1}{2}$ "	.625	.500
AU-8016-NB-6	6.00	$\frac{3}{8}$ "-20 NS	$2\frac{1}{2}$ "	.656	.500

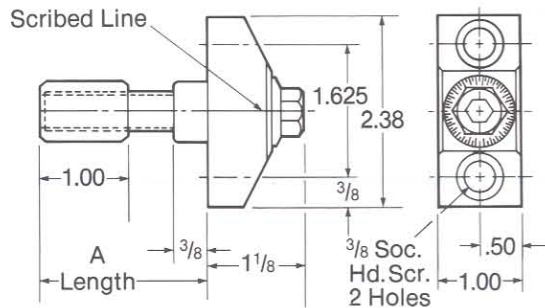
Round Mount



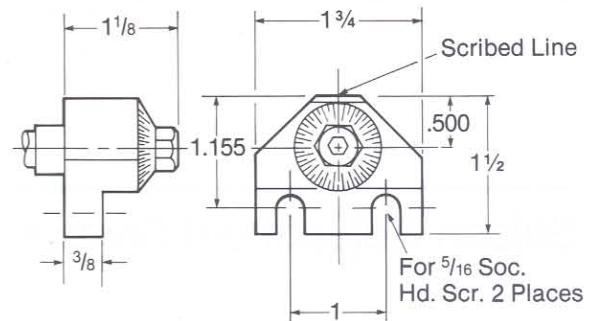
Side Mount



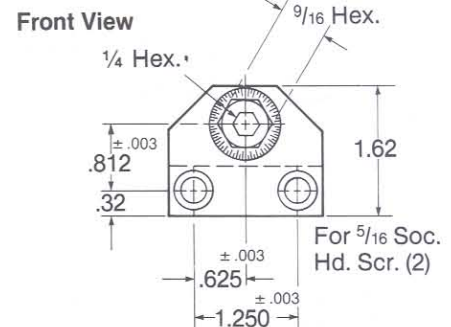
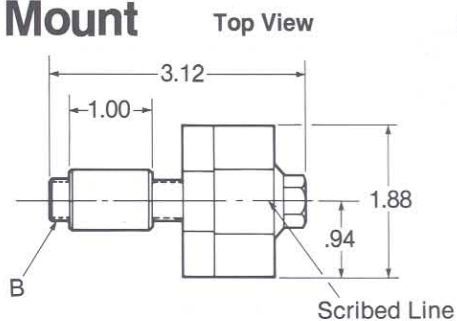
"R" Mount



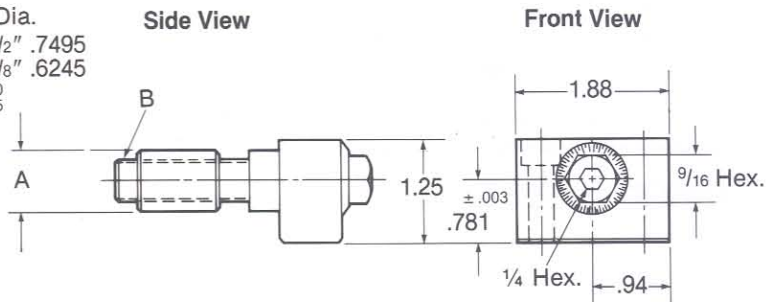
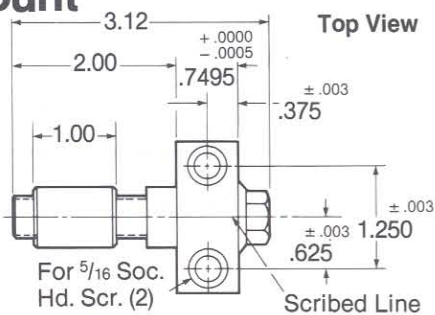
New Britain Mount



L Mount



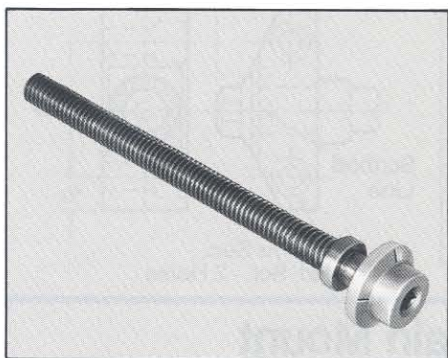
T Mount



Round Mount	Side Mount	"R" Mount	New Britain Mount	L Mount	T Mount	Length	Left-hand Threads
MRJ-8054	S	R	NB	L	T	2"	1/2"-40
MRJ-8096	S	R	NB6	L	T	2"	3/8"-40
MRJ-8054-33	S33	R33	NB33	—	—	3"	1/2"-40
MRJ-8096-33	S33	R33	NB7	—	—	3"	3/8"-40
MRJ-8054-45	S45	R45	NB45	—	—	4 23/32"	1/2"-40
MRJ-8096-45	S45	R45	NB45	—	—	4 23/32"	3/8"-40

For Round Mount Style use Round Mount part number. For other mounts use Round Mount part number and add letter designation as in chart.

Stilson Adjustment Units

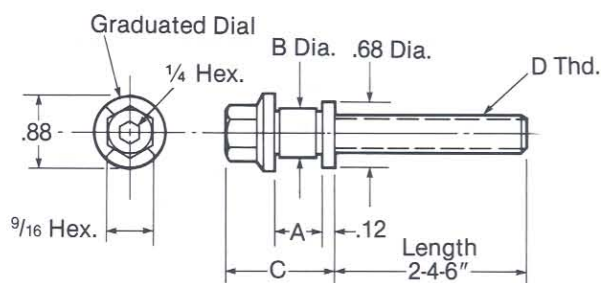


Stilson Adjustment Screws and Yokes

The Stilson adjustment unit provides rapid, accurate adjustment of tools, cutters, bars, blocks and stops at a low price. A turn of the dial advances or retracts the fine pitch screw which is available in two standard thread sizes: 1/2"-20 NF and 3/8"-24 NF. Stilson adjustment units are available in four mounting styles and two standard thread lengths. They have a durable black oxide finish and are available for immediate delivery.

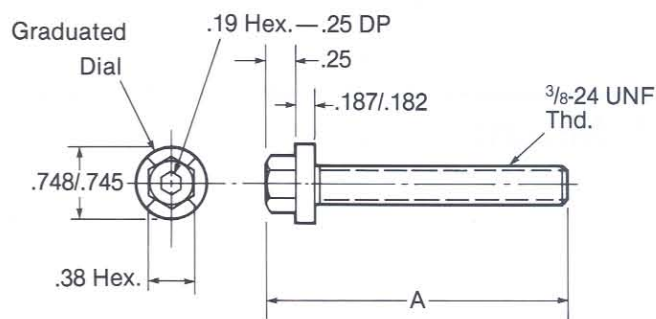
Stilson adjustment screws are offered in two styles. One style is for use with Stilson mounting yokes and is offered in several sizes. The other is a New Britain style with a fully threaded stud. Stilson mounting yokes are cyanide hardened and have a black oxide finish.

Stilson Adjustment Screws



Stilson Part No.	+ .000 - .003 A	+ .000 - .005 B	C	D
AS-8208*	.380	.375	1.0	3/8"-16
AS-8210*	.380	.375	1.0	3/8"-24
AS-8211*	.505	.500	1.12	1/2"-20
AS-8212*	.505	.500	1.12	1/2"-13

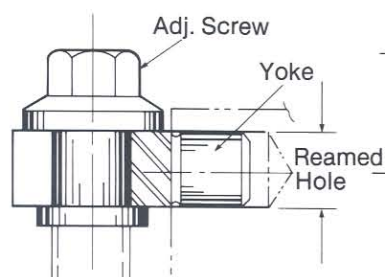
*Specify 2, 4 or 6" length



Stilson Part No.	A
AS-8234	1.25
AS-8235	1.75
AS-8236	2.25
AS-8237	3.00

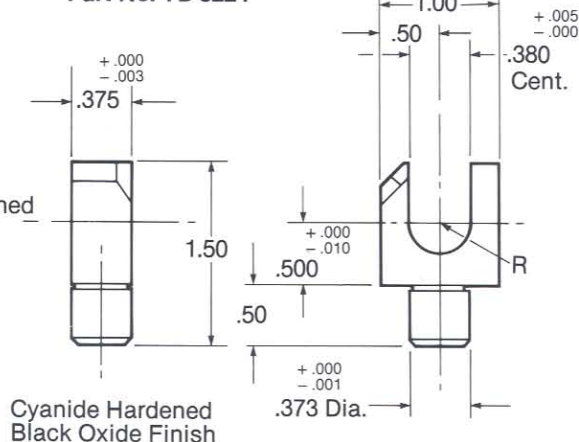
Material: CRS
Finish: Black Oxide

Stilson Yokes



Mounting Stilson Yoke and Adjusting Screw requires only one reamed hole.

Part No. YB-8224



Cyanide Hardened
Black Oxide Finish

Part No. YB-8225

